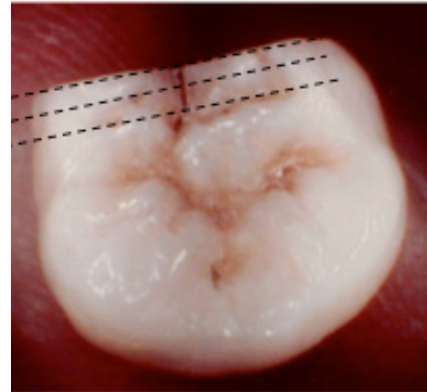
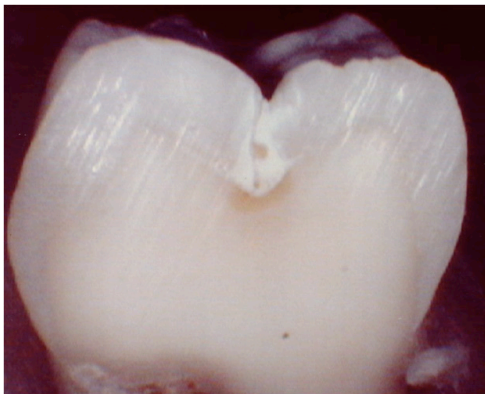


Would You Seal THIS?

Carol Vander Stoep, RDH, BSDH

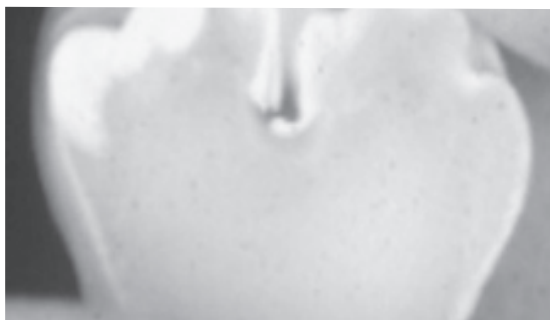


Left: X-rays and probing indicate a sound tooth. Neither a dental probe nor a toothbrush bristle can penetrate these fissures. This tooth was then sectioned as indicated in the right image, above.



Left: First section. The demineralization and decay are obvious. The ultra-white area to either side of the fissure indicate demineralization and loss of crystalline enamel structure through which acids percolate. Note the decay below. X-rays do not pick it up until it is 2 – 3mm deep into the tooth's second layer.

Right: Frank decay shows in the third section. OOPS!



Left: A dental probe or x-ray will not catch the developmental crack in the sidewall of this fissure until decay is significantly advanced.

Images courtesy of Graeme Milicich.